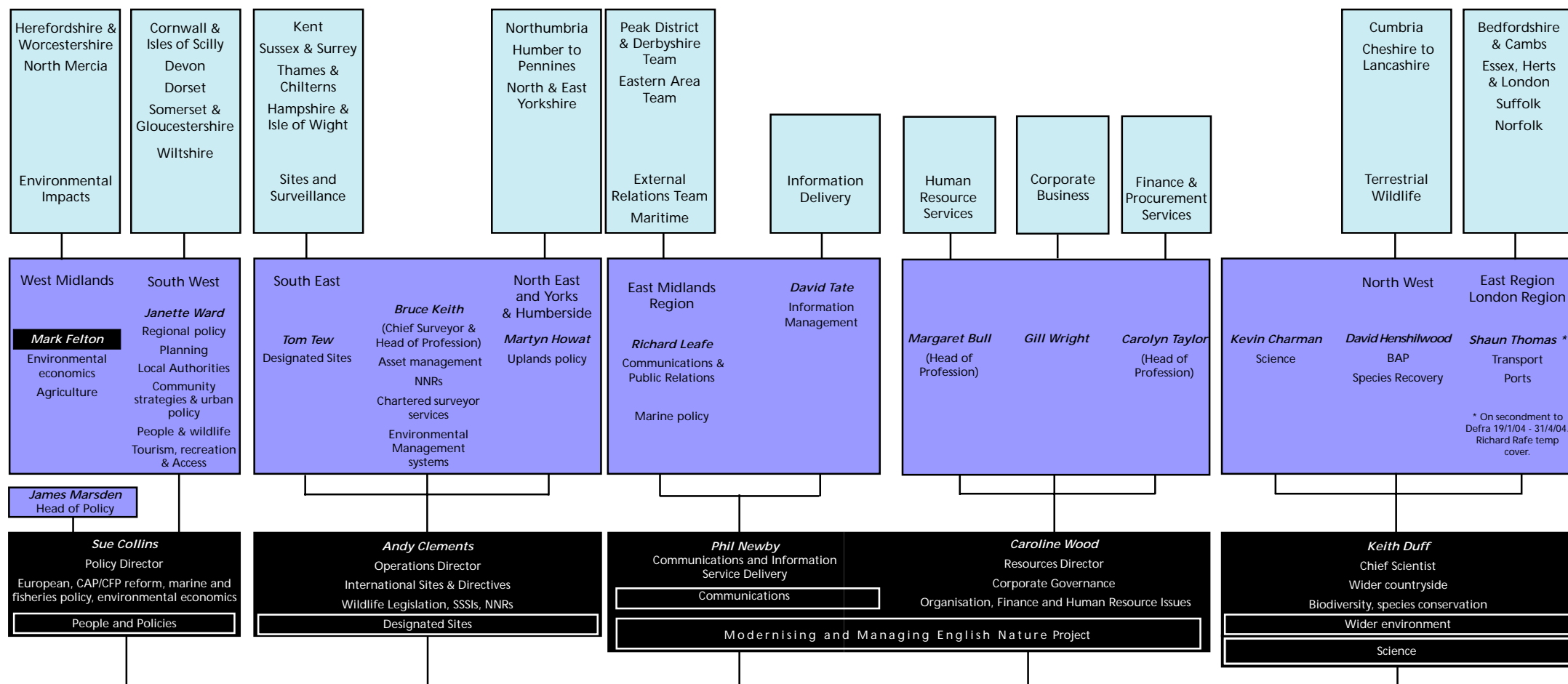
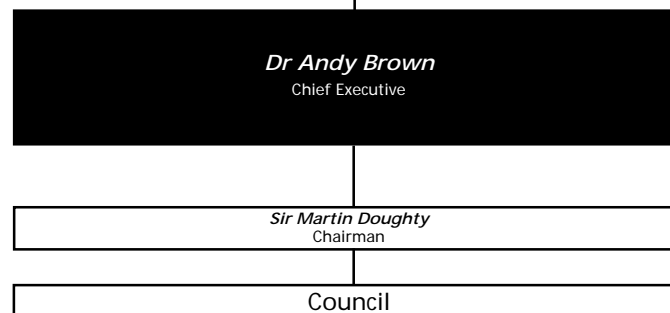
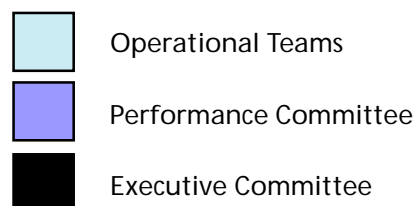


# Organisational structure



## English Nature accountabilities and structure



The chart shows the main work areas and responsibilities of Directors and General Managers. Area Teams are grouped to reflect Government Office regional boundaries.

The Regional role shown for seven General Managers involves working with the Area Team Managers on successful implementation of regional plans and projects. The relationship shown between General Managers and Directors reflects key responsibilities and reporting. General Managers will be responsible to other Directors for particular areas of work.